



GMT MONTHLY MEMBERSHIP PROGRESS REPORT

Results as of: 5/31/2017

Multiple District 25

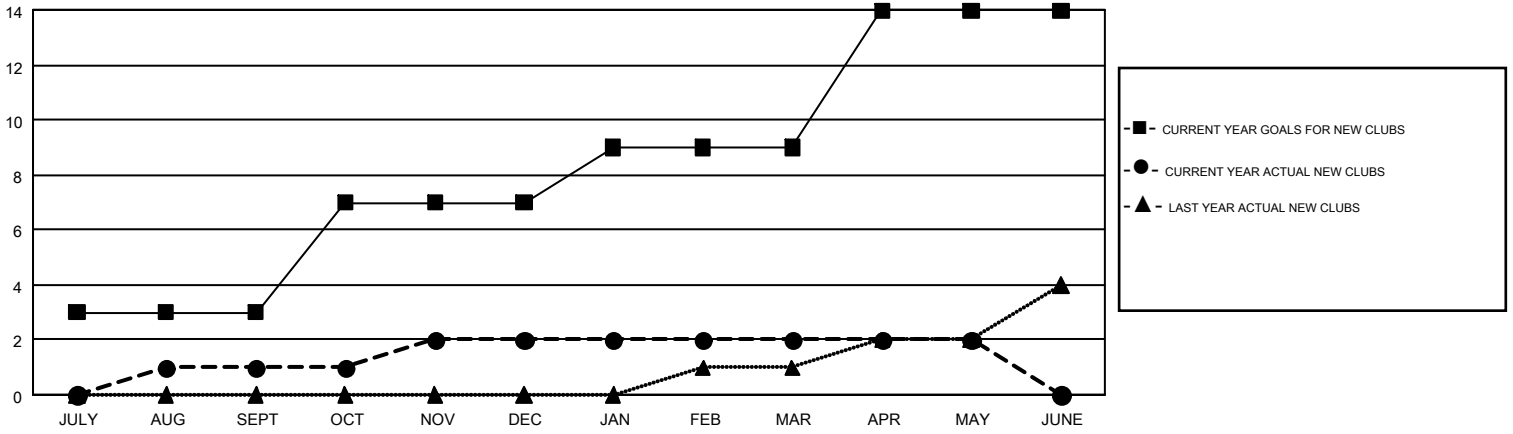
LOCATION: INDIANA

GMT: THOMAS MATNEY

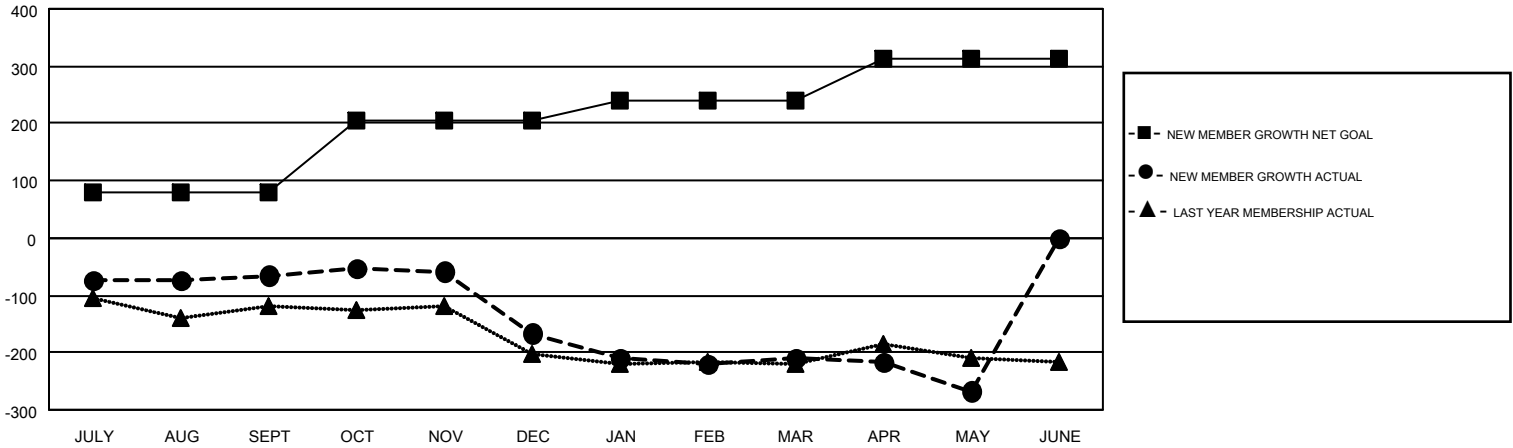
GMT CA 1

Clubs				Members			
RESULTS FOR 2016-2017				RESULTS FOR 2016-2017			
QUARTER	NEW CLUB GOAL	NEW CLUBS	DROPPED CLUBS	QUARTER	NEW MEMBER GROWTH NET GOAL (not reinstated or transfers)	NEW MEMBER GROWTH ACTUAL (not reinstated or transfers)	DROPPED MEMBERS ACTUAL (including transfers)
JULY/AUG/SEPT	3	1	1	JULY/AUG/SEPT	81	243	308
OCT/NOV/DEC	4	1	3	OCT/NOV/DEC	123	210	311
JAN/FEB/MAR	2	0	0	JAN/FEB/MAR	35	185	227
APR/MAY/JUNE	5	0	0	APR/MAY/JUNE	75	129	188

GOALS AND ACTUAL NEW CLUBS CUMULATIVE



GOALS AND ACTUAL MEMBERS CUMULATIVE



DROPPED CLUBS: 4	233 CLUBS OF 396 ADDED 1 OR MORE NEW MEMBERS	<u>GENDER DISTRIBUTION</u>	
<u>DROPPED MEMBERS</u>		MALE	7,362 (72.26%)
DECEASED	163	FEMALE	2,826 (27.74%)
CLUB CANCELLED	33	TOTAL FAMILY UNIT MEMBERS	2,291
OTHER	838	FAMILY MEMBERS PAYING HALF DUES	1,172
TOTAL	1,034	CLICK HERE FOR CUMULATIVE MEMBERSHIP DATA	